

AJS-XG-W1 Capping Machine



Instruction Manual

I. Main Specifications, Dimensions and Parameters

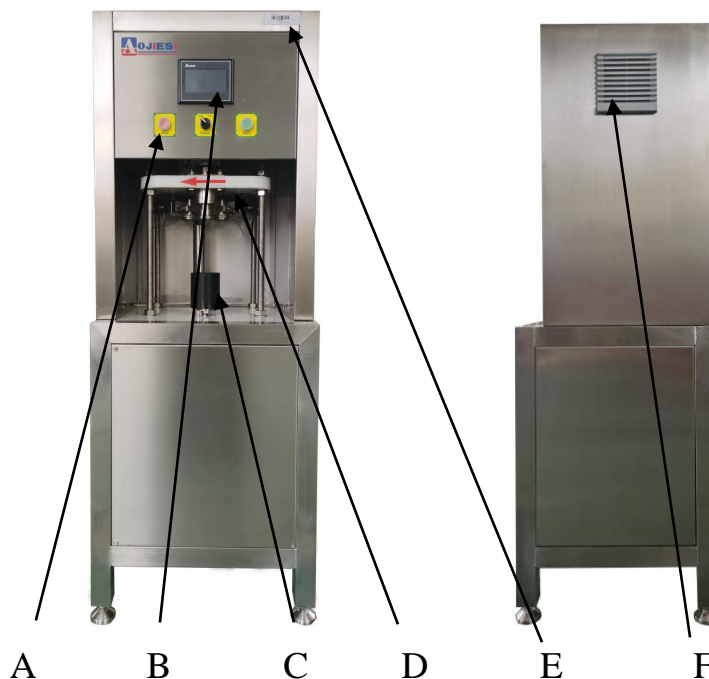
1. Main specifications and dimensions

Machine Dimensions	21.6inch19.68inch×57inch (550mm×500mm×1450mm)
Maximum Cylinder Stroke	2.95inch (75mm)
Net Weight	154lb (70kg)
Seal-capping type	Rotary type
Production Capacity	300-400 Cans/Hour
Applicable Scope	330 ml / 500 ml Cans

2. Technical Parameters

Cylinder Valve Pressure	58~72.5PSI (0.4~0.5Mpa)
Power Voltage	3-phase 220V 60Hz

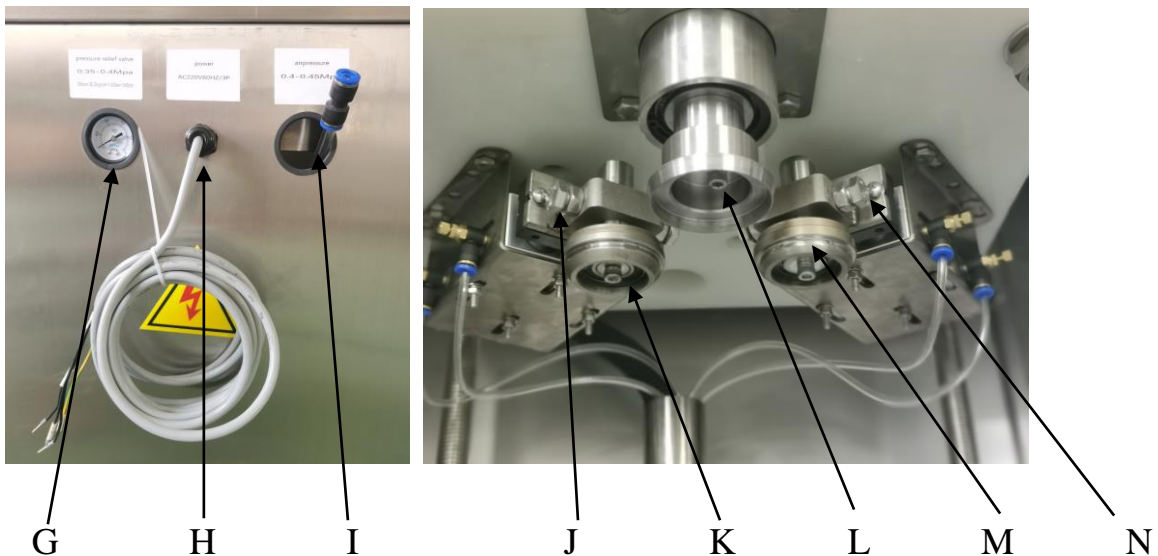
II. Operation Parts Introduction



A. Capping machine control button.

B. Capping machine touch screen, controlling operation interface.

- C. Can positioning plate.
- D. Machine capping head assembly, with motor rotating clockwise.
- E. Machine model barcode.
- F. Capping machine scavenge port.



- G. Compressed air pressure regulator: This regulator shows the applicable pressure for cylinder valve is 50.8-58PSI (0.35-0.4Mpa) .
- H. Power supply voltage: The machine adopts three-phase 220V 60HZ power supply voltage.
- I. Compressed air source pressure: Connect compressed air with 10mm diameter air pipe and insert and connect firmly with this interface, which is

used to control the cylinder pressure of capping machine, and adjust the air source pressure to 58-72.5PSI (0.4-0.5Mpa) .

J. Spin B fastens retaining nut.

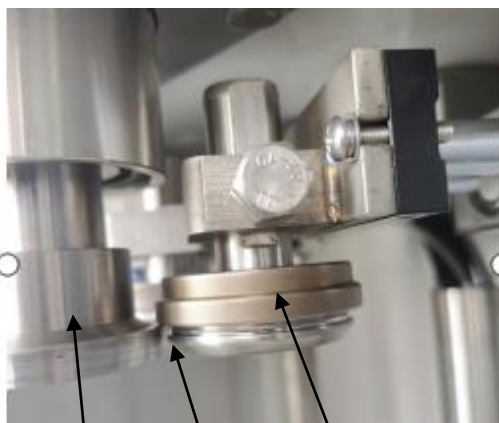
K. Spin B: Loosen J, and then Spin B can adjust the distance from top to bottom.

L. EZO crowner head.

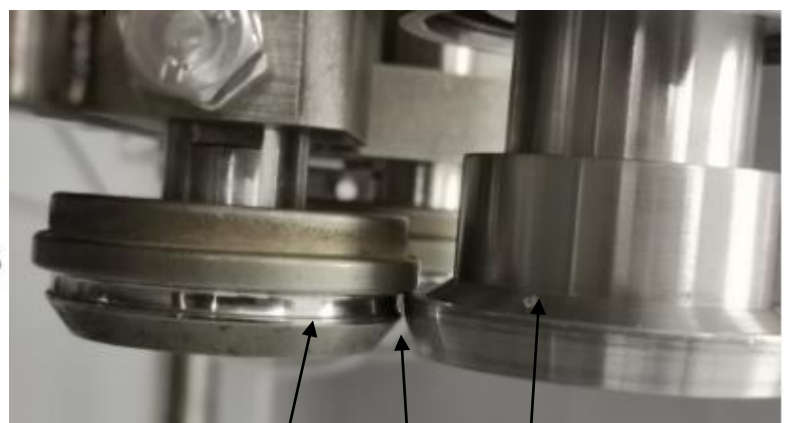
M. Spin A: Loosen N, and then Spin A can adjust the distance from top to bottom.

N. Spin A fastens retaining nut.

Picture and description of the position of capping head and crowner head of capping machine



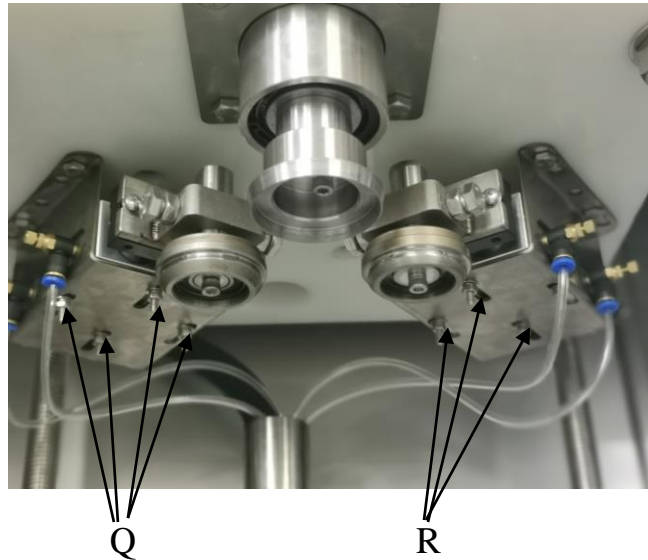
L O M



K P L

A. Spacing distance between crowner head L and Spin A (spacing distance and

the distance from top to bottom)



- B. Spacing distance between crowner head L and Spin B (spacing distance and the distance from top to bottom, which has been debugged qualified before delivery)
- C. Capping machine Spin A adjusting nut: (with one on the left and one on the right, use the spare nut to tighten respectively and loosen the spare nut first when adjusting) This nut can be loosened to adjust the upper and lower distance between Spin B and crowner head.
- D. Capping machine Spin A adjusting nut: Spin A can be adjusted. Pay attention to the spacing distance from the crowner head. (spacing distance and distance from top to bottom, which has been debugged qualified before delivery).



S



S

T

S. 330ml cans fixed base.

T. 500ml cans fixed base.

III. Installation of Pipelines and Air Channels

1. Installation of pipelines and air channels

1) Compressed air interface: Lead the 58 ~ 72.5PSI (0.4~0.5Mpa) compressed air using a high-pressure air pipe with $\phi 10\text{mm}$ external diameter to the right-angle connector and insert firmly.

2) Power-on: Check the motor rotation direction, which should be clockwise.

1. Pressure regulator regulation method and maintenance:

1) Before turning the knob, please pull it up first and then rotate it, and rotate the knob depressed for the position.

2) Turning the knob clockwise is to increase the outlet pressure, while counterclockwise is to reduce the outlet pressure.

3) When in use, the pressure should not exceed 137PSI(0.95Mpa/cm²), and the filter element should be replaced in time when the outlet air volume significantly decreases.

4) Periodically inject JIS K2213 oil (ISO VG32 or the same grade oil) into the oiler. The number 0 means small amount of oil and 9 means large amount of oil.

IV. Equipment Use

1. Connect the air source and check whether the air source pressure meets the requirements.
2. Turn on the power.
3. Rotate the base of the corresponding can.
4. When the can is filled with beer, place the lid on the can and then put the can on the corresponding positioning plate.

5. Press the start button, and the capping machine will automatically rotate the lid.

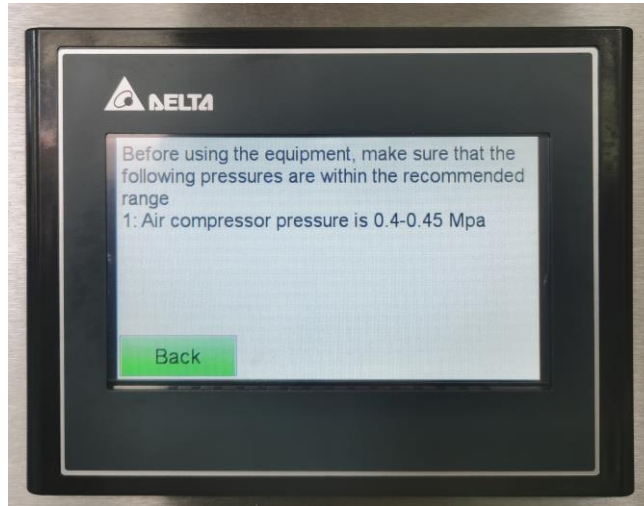
First, the cylinder will drive the can to a specific position, and then the Spin A will work. After the operation of Spin A, the Spin B will work. After the capping is finished, the cylinder is reset and the can shall be removed.

V. Touching Screen Interface



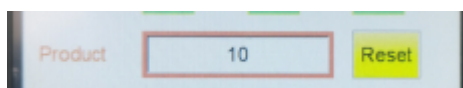
Touch screen initial interface, Chinese Option, English Option and main items. Click

on the , the following interface appears.



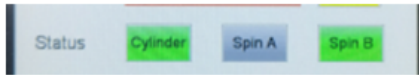
Choose  enter the following interface.

This interface is for setting relevant parameters, designating the running time of Cylinder, Spin A and Spin B. This running time can be modified. However, we have set it before delivery, so it is not recommended to be modified.



Represents the cumulative number of capping,

which can be cleared to zero. Keep pressing Reset for 2-4 seconds, the value will return to zero.



When the capping machine is started, the relevant working status is displayed.

Before the equipment starts to work, start the motor for operation first. Click the Motor when you receive it, and the Motor starts to run. Pay attention to check the running direction of the Motor, which should be clockwise.

VI. Equipment Maintenance

- 1) After daily work, clean the working table and close the wine source and air source.
- 2) Maintain a certain amount of lubricating oil in the conditioning unit for oil. Remember to release the water in the pressure relief valve regularly.
- 3) Clean the whole machine at least once a day.